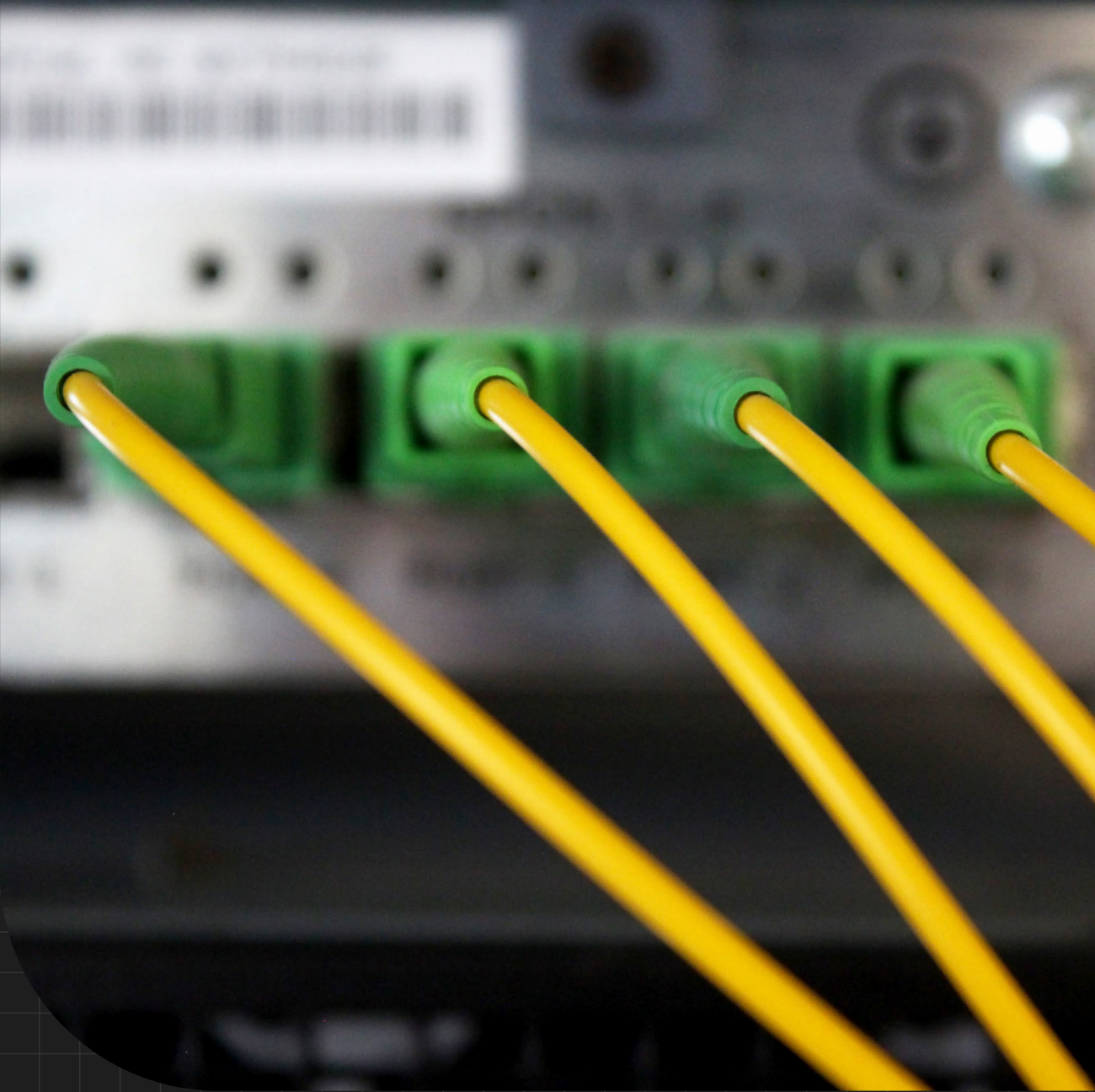


# Fiber to the Edge Networks

MODULAR FIBER OPTIC NETWORKS

PRODUCT BROCHURE

ISSUED 2022 06 30



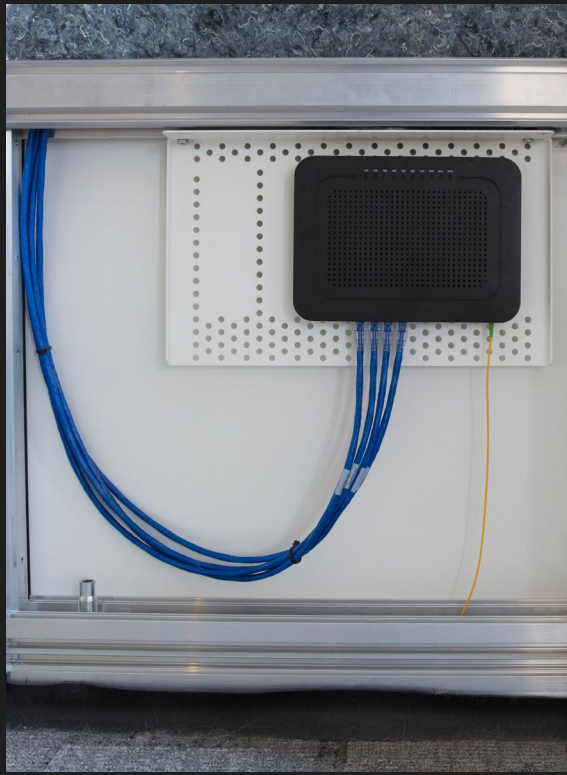


## QUICK-CONNECT CABLING WITH LONG-TERM CONNECTIVITY

DIRTT's Fiber to the Edge (FTTE) networks give you more through less. A single fiber optic cable delivers unlimited bandwidth capability and a signal strength that reaches miles, not meters. It also offers a huge reduction in supporting infrastructure and material costs compared to copper cabling alternatives. Pre-labelled and pre-terminated harnesses run from the building entry to the user devices offering fast install and easy adaptability when you need it. Bringing together industry-leading technology and future-ready infrastructure empowers smart building benefits in your space.

## WE'VE GOT YOU COVERED

No two networks are the same. That's why DIRTT has highly trained network designers and consultants to customize the design and delivery of your project. We provide the modular cable components and electronic equipment you need. In addition, DIRTT takes on the full scope of installation and commission with industry-leading partnerships for integration and warranty.



## SCALE WHEN YOU NEED TO

Technology is always changing and with that comes a constant need to update the infrastructure that uses it. Fiber to the edge allows you to accommodate higher bandwidth needs without replacing cabling. As you add more devices, operational technology, and security services to your space, fiber optic networks can handle those high-performance requirements. This future-ready approach allows you to grow without upgrading cabling.

## CONNECTED INFRASTRUCTURE FOR THE BUILDINGS OF TOMORROW

DIRTT's Fiber to the Edge offering is part of our connected infrastructure solution. This approach improves the operation and efficiency of modern buildings. Deploying modular, future-ready connectivity satisfies your needs today, while providing the foundation for your technology and building automation needs tomorrow.





## GAME CHANGING DISTANCES

With single mode fiber optic cabling, short wiring runs are a thing of the past. This cable can carry a signal for miles allowing you to service more of your building with less infrastructure. There's no cooling required. No battery backups. Reducing the number of wiring rooms on the floorplate comes with significant cost savings for the project. With one centralized room, you can connect your entire space.



## DO MORE WITH LESS

One single mode fiber optic cable can do the work of 128 copper cables. That translates to lower material costs and valuable space savings in your plenum. Support multiple services like video, network, and security on a single cable type. Software-defined local area networks allow users to reroute network signals remotely without having to physically repatch cables on-site. That all adds up to easier management and control of your network.



## Fiber to the Edge Networks

### COMPONENT CALL OUTS

01	Optical line terminal (OLT)
02	Single mode fiber primary
03	Splitter
04	Single mode fiber secondary
05	Optical networks terminal (ONT)
06	Copper link
07	Faceplates

### Technical Overview

#### FEATURES

Maximum signal distance: 65,717 feet (20 km)

UL and CSA compliant

#### DESIGN OPTIONS

All components can be deployed in ceilings or DIRTT's low-profile access floors

Passive optical LAN: economical point-to-multi-point network

Active ethernet: point-to-point for dedicated bandwidth

#### FINISH OPTIONS

Variety of faceplate, jack, and trim ring colors available

Stainless steel options available for healthcare requirements

Anodized floor boxes available with black or granite finishes

**BUILD DYNAMIC SPACES**

[dirtt.com](http://dirtt.com) ↗