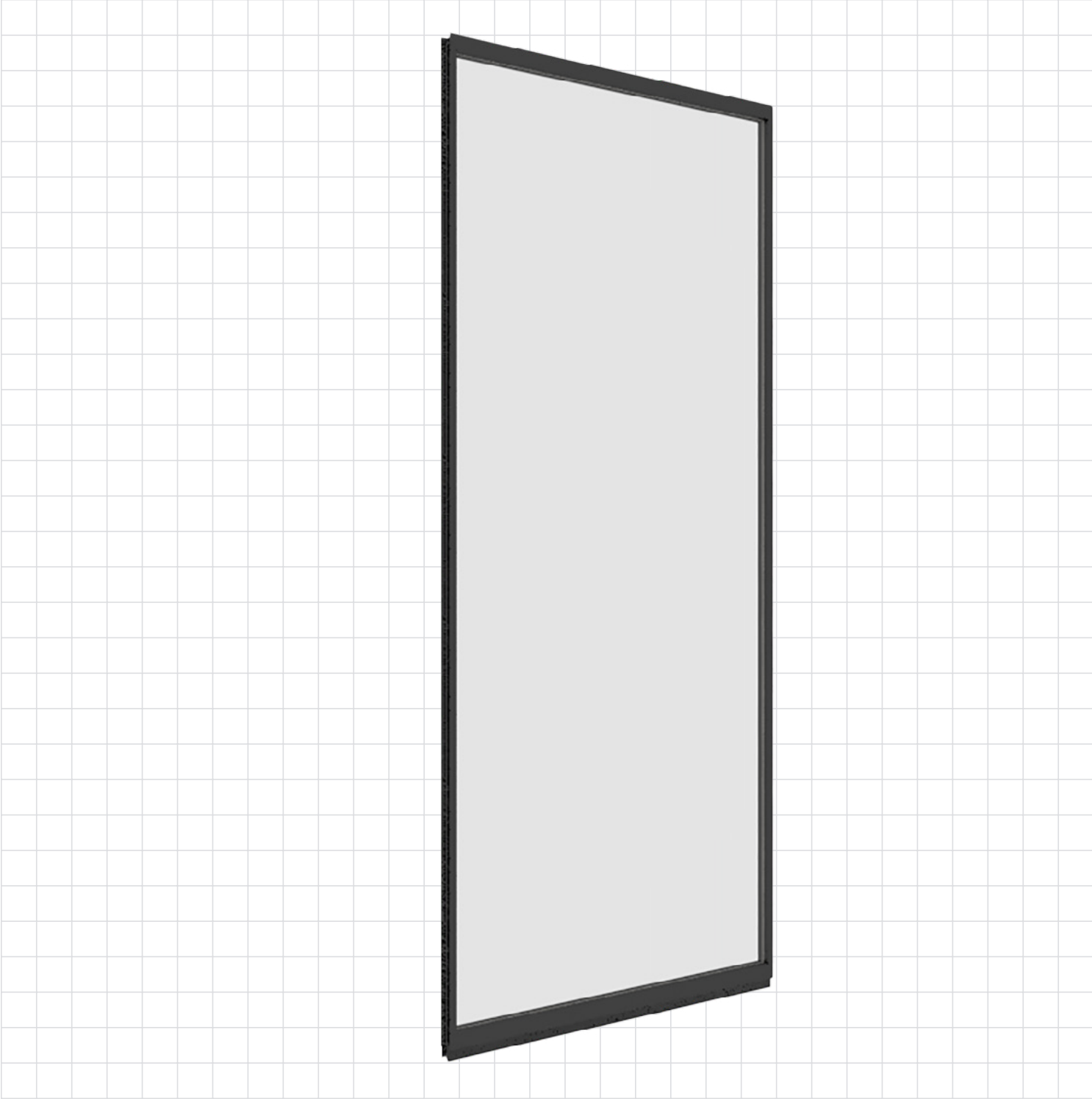


Inspire™ Glass Walls

PRODUCT CUT SHEET





DIRTT EXPERIENCE CENTER
Dallas, TX

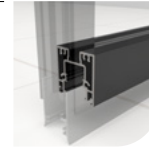
Make a maximum impact with a minimal profile. Inspire is a low-profile glass wall that delivers long-term adaptability thanks to its modular nature. This simple and elegant aesthetic for glass walls can be installed quickly to keep your project on schedule. At just two inches wide, Inspire seamlessly connects with our 4" Solid Walls to integrate with the rest of the DIRTT system.



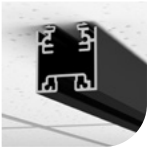
SYSTEM FEATURES

01	Base extrusion is 2" (51 mm) high
02	Wall width and height configuration is fully customizable
03	Header rail attaches directly to ceiling, soffit, bulkhead, or structure and can be embedded in DIRTT timber or within a recessed channel
04	Inspire integrates seamlessly into the DIRTT construction system
05	Modular design supports quick installation and easy reconfiguration
06	Use inline or offset transitions to DIRTT 4" Solid Wall
07	Levelling system accommodates base building variance
	Sound transmission class (STC) rating: 33 – 38
	SCS Indoor Advantage Gold certified

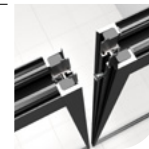
01



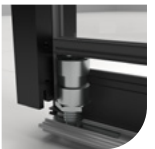
03



06



07



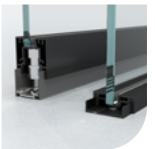
SYSTEM OPTIONS

08	Compatible with the full suite of DIRTT Door modules
09	Available in original or low-profile base
10	Seismic compatible
11	Microline muntin detail
12	AV Integration
	Limit transfer of smoke with our non-rated, smoke partition
	Multiple glass thickness and finishes

08



09



10



11



12



SIZE

Standard wall thickness	2" (51 mm)
Base extrusion height	Original: 2" (51 mm) Low-profile: ¾" (19 mm)
Wall width minimum	5 ½" (140 mm)
Wall width maximum	Variable dependent on glass selection
Modular and stick-built single-pane glass ceiling height	18" (457 mm) - 12' (3.66 m)*
Stick-built dual-pane and multi-pane configuration ceiling height	Variable, dependent on support and glass type
Extrusion length maximum	12' (3.66 m)

*Frame assemblies that exceed module maximums must be validated by DIRT™ to confirm they meet building code.

TOLERANCES

Wall height adjustability	Original: -½" (13 mm) +¾" (16 mm) Low Profile: -0" (0 mm) + ¾" (9.5 mm)
----------------------------------	--

GLASS OPTIONS

Tempered	Laminated
Clear or low iron	Clear or translucent interlayer finish
Optional etched finish	¼" (6 mm), ⅜" (10 mm), or ½" (12 mm)*
¼" (6 mm), ⅜" (10 mm), or ½" (12 mm)*	

*Inspire walls using the ¾" base can only use ¼" (6 mm) glass in a wall using one pane of glass.

DESIGN CONFIGURATIONS

Wall Module Configurations	Wall Connections
Full-height, free-standing, or low wall	Frame connects to acoustic ceiling tile (ACT) grid, bulkhead, drywall soffit, or metal stud kickers
Stacking options with DIRT™ 4" Solid Wall	Base track secures to the base building with carpet grippers, double-sided tape, or seismic anchoring
Customize ceiling and base trim shape and color	Modules connect with frame-to-frame inline connections
Finish the wall with optional end caps	Use inline or offset transitions to DIRT™ 4" Solid Walls
Configure for seismic compliance when needed	Wall modules connect to door modules with frame-to-frame inline or offset connections
Original or low-profile base	Post options: Inline, 90°, 120°, three-way, four-way, and drywall

EXTRUSION FINISH OPTIONS

Clear anodized aluminum
Powder coat
Custom finishes

DIRT™ SYSTEM INTEGRATIONS

DIRT™ Classic Glass Walls
DIRT™ Double Pane Glass Wall
DIRT™ Doors
Third-party provided hardware and technology

