

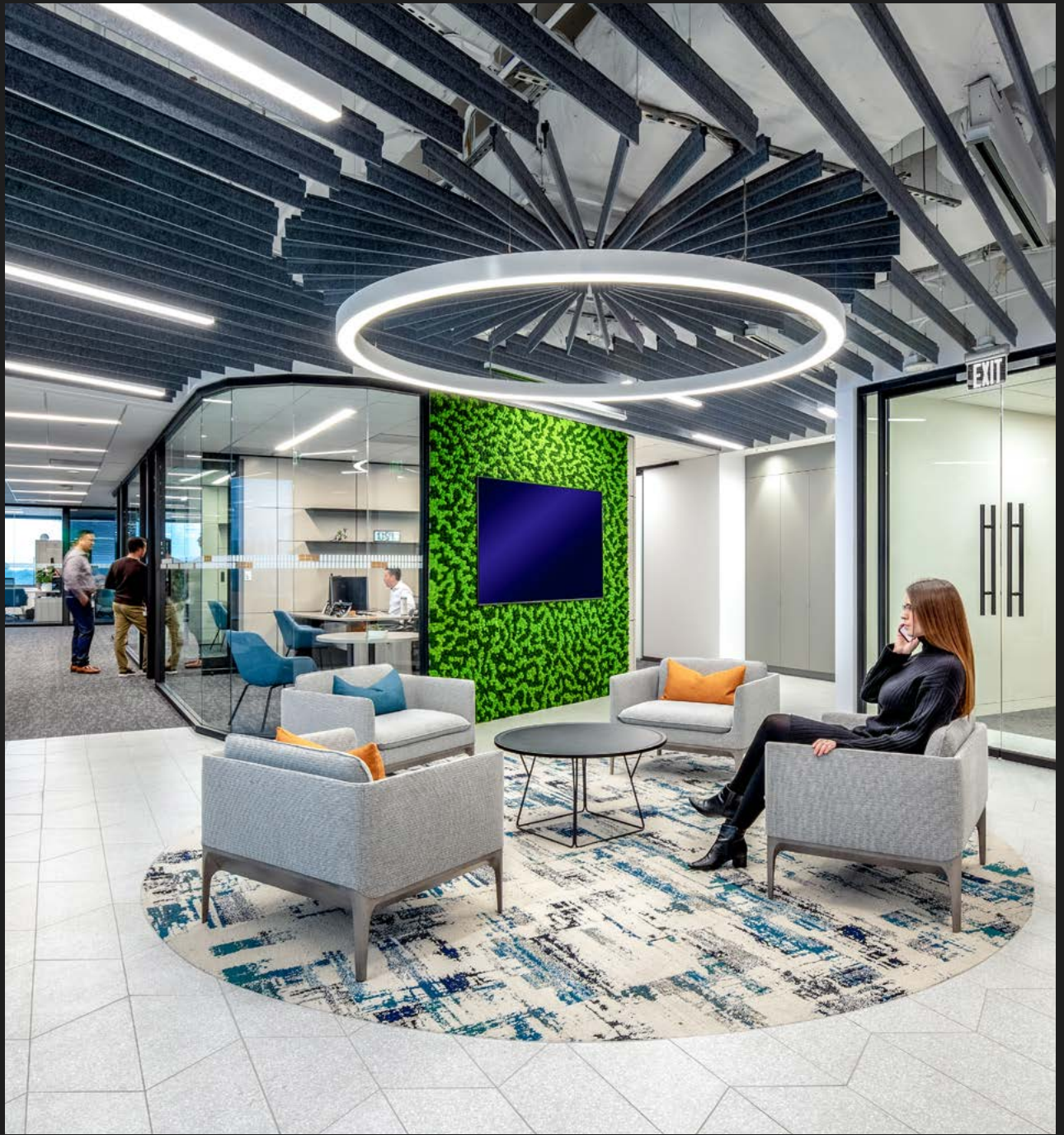
Integrated Technology

INTEGRATED TECHNOLOGY

PRODUCT BROCHURE

ISSUED 2024 01 02





USE DIRTT WALLS TO HOUSE AND PROTECT POWERFUL TECHNOLOGY

Elevate the performance of your space by incorporating the latest in audio, video, and teleconferencing technologies. DIRTT provides a variety of options to integrate hardware into the design of your space. Wall-mount devices or get a clean, modern aesthetic by seamlessly embedding technology directly into your walls. Get the functionality you need today with the power to update in the future as technology advances.



GET TAILORED AESTHETICS

Your technology needs aren't one-size-fits-all and neither are DIRT's integrated technology options. We customize our components to $\frac{1}{16}$ " , which gives you total design freedom. Embed your display in the wall cavity behind a flush-mount panel or create a custom casework enclosure for your equipment. Elevate your look with finishes that precisely match your aesthetic to ensure you make the most of your technology and your space.





READY FOR THE FUTURE

PRODUCT BROCHURE

Technology is always changing, and you can change with it. As part of the DIRTT Construction System, our integrated technology options give you the ability to adapt your space and update your technology whenever you need. Our assemblies offer easy access to the wall cavity, so whether you're updating a device or relocating across the office, the change is easy, swift, and clean.

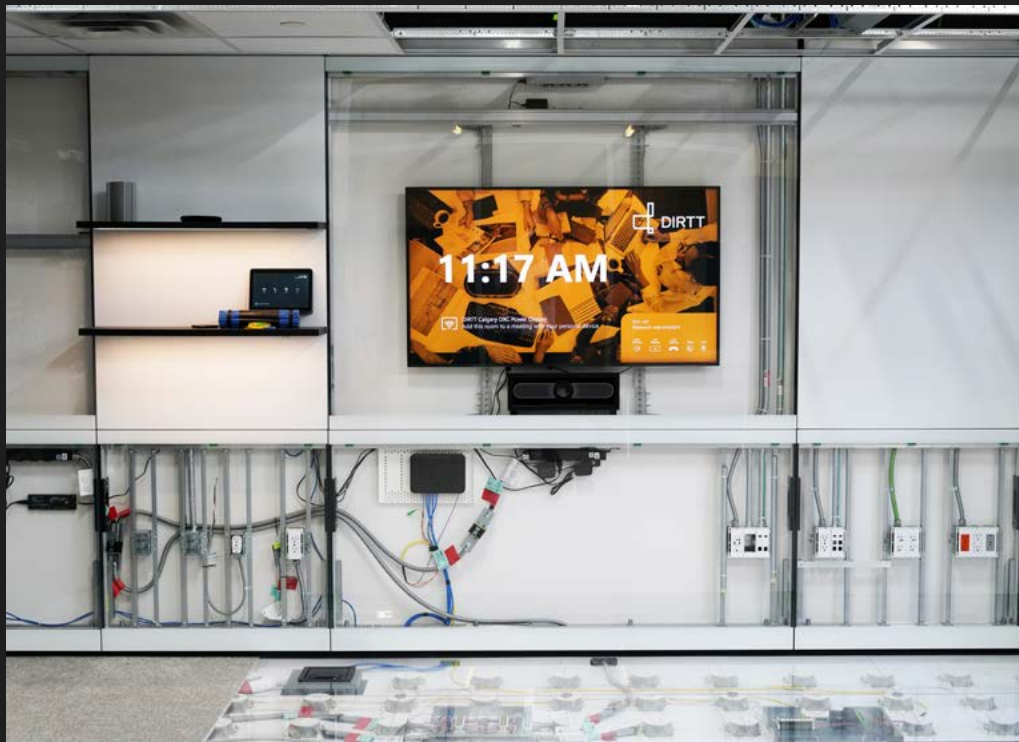


INTEGRATED TECHNOLOGY



EASY ACCESS

Whether you're creating a space with audio/video equipment or conferencing solutions, DIRTT walls make it easy to install and adjust. Easy-to-remove wall panels allow access to the cavity and to equipment, making it simple to connect cabling or troubleshoot. House your equipment with custom casework solutions in a way that's as accessible as it is attractive.





POWERFUL COMPATIBILITY

No matter how you equip your space, DIRTT is ready to support your technology needs. We play well with others. That means our system can support a variety of third-party components. Choose the equipment that suits your needs, and we'll elegantly build it into your design.





MAKE A CONNECTION

Whether you're meeting with distant colleagues or empowering a hybrid work style, DIRTT can support your conferencing needs. We can integrate with all major conferencing solutions and streamline your aesthetic by mounting cameras, speakers, microphones, and monitors on our walls or directly into our assemblies.



Integrated Technology

SYSTEM FEATURES

- 01** DIRT's ability to customize supports a wide variety of hardware types and dimensions
- 02** Mount devices on the wall or house them within the cavity for a sleek look and added protection
- 03** Quickly access devices for maintenance and adjustment
- 04** DIRT experts consult with you and your technology vendors to optimize performance and aesthetics
- 05** Our adaptable construction system allows you to easily update evolving technology

DESIGN OPTIONS*

Displays	Door-mounted schedulers
Conferencing cameras and other hardware	In-wall tablets
Wall-mounted schedulers	Interactive surfaces

**Third-party technology integration*



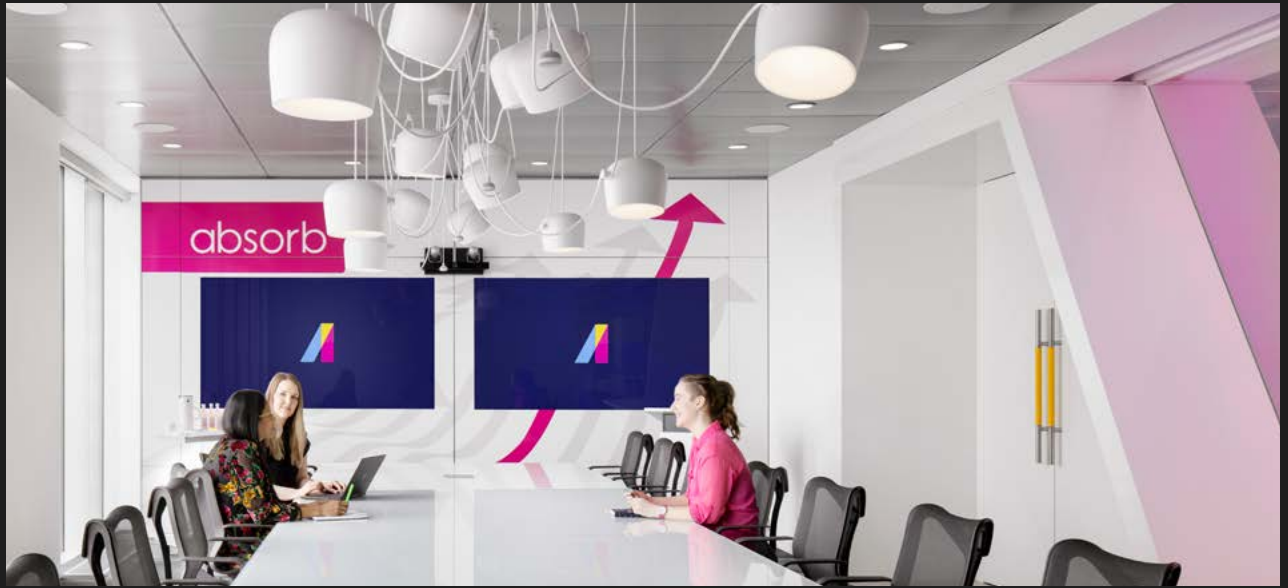
SOLID INTEGRATED DISPLAY

SYSTEM FEATURES

- 01 Display is fully integrated inside the wall to save space and provide a sleek aesthetic
- 02 Screen area of the display is visible through a custom cutout
- 03 Protective panel is attached with magnets for easy access to the wall cavity
- 04 Cabling is hidden within the wall cavity for a clean appearance

PANEL FINISH OPTIONS

- | | |
|--------------------------|----------------------------|
| ChromacoatPlus (paint) | WriteAway (writeable film) |
| Chromacoat (paint) | Fabric |
| Thermofoil (3D Laminate) | Custom finishes |
| Wood Veneer | |



GLASS INTEGRATED DISPLAY

SYSTEM FEATURES

- 01 Display is fully integrated inside the wall to save space and provide a sleek aesthetic
- 02 Technology is protected behind glass offering an easy-to-clean display for improved infection prevention
- 03 Screen area of the display visible behind customized backpainted glass
- 04 Touch film can be applied to enhance experience
- 05 Cabling is hidden within the wall cavity for a clean appearance

GLASS FINISH OPTIONS

- Backpainted glass



CASEWORK ENCLOSURE

SYSTEM FEATURES

- 01 Casework enclosure can be customized to the width and depth of your technology
- 02 Mounting plane supports third-party products

PANEL FINISH OPTIONS

- ChromacoatPlus (paint)
- Chromacoat (paint)
- Thermofoil (3D Laminate)
- Wood Veneer

WALL-MOUNTED DISPLAY

SYSTEM FEATURES

- 01 Wall-mounted technology offers an unobstructed view but remains easily accessible
- 02 Customized cutout prevents drilling into wall panel
- 03 DIRTT system integrates with third-party mounting brackets to support any hardware selection

PANEL FINISH OPTIONS

- ChromacoatPlus (paint) Magnetic marker board
- Chromacoat (paint) WriteAway (writable film)
- Thermofoil (3D Laminate) Fabric
- Wood Veneer Custom finishes
- Backpainted glass





RECESS-MOUNTED DISPLAY

SYSTEM FEATURES

- | | |
|----|--|
| 01 | Recessed mount allows display to sit flat against the wall |
| 02 | Wall cavity provides space to accommodate small components such as PCs |
| 03 | DIRTT wall assembly allows technology to be easily accessible |
| 04 | Articulating bracket, network port, and five-port power strip included |

PANEL FINISH OPTIONS

- | | |
|--------------------------|---------------------------|
| ChromacoatPlus (paint) | Magnetic marker board |
| Chromacoat (paint) | WriteAway (writable film) |
| Thermofoil (3D Laminate) | Fabric |
| Wood Veneer | Custom finishes |
| Backpainted Glass | |



CUSTOM APPLICATIONS

SYSTEM FEATURES

- | | |
|----|---|
| 01 | Use the DIRTT System to create expansive technology installations |
| 02 | Our technology team will work with you to customize large scale video walls and pass-through wall |



BUILD DYNAMIC SPACES

dirtt.com ↗